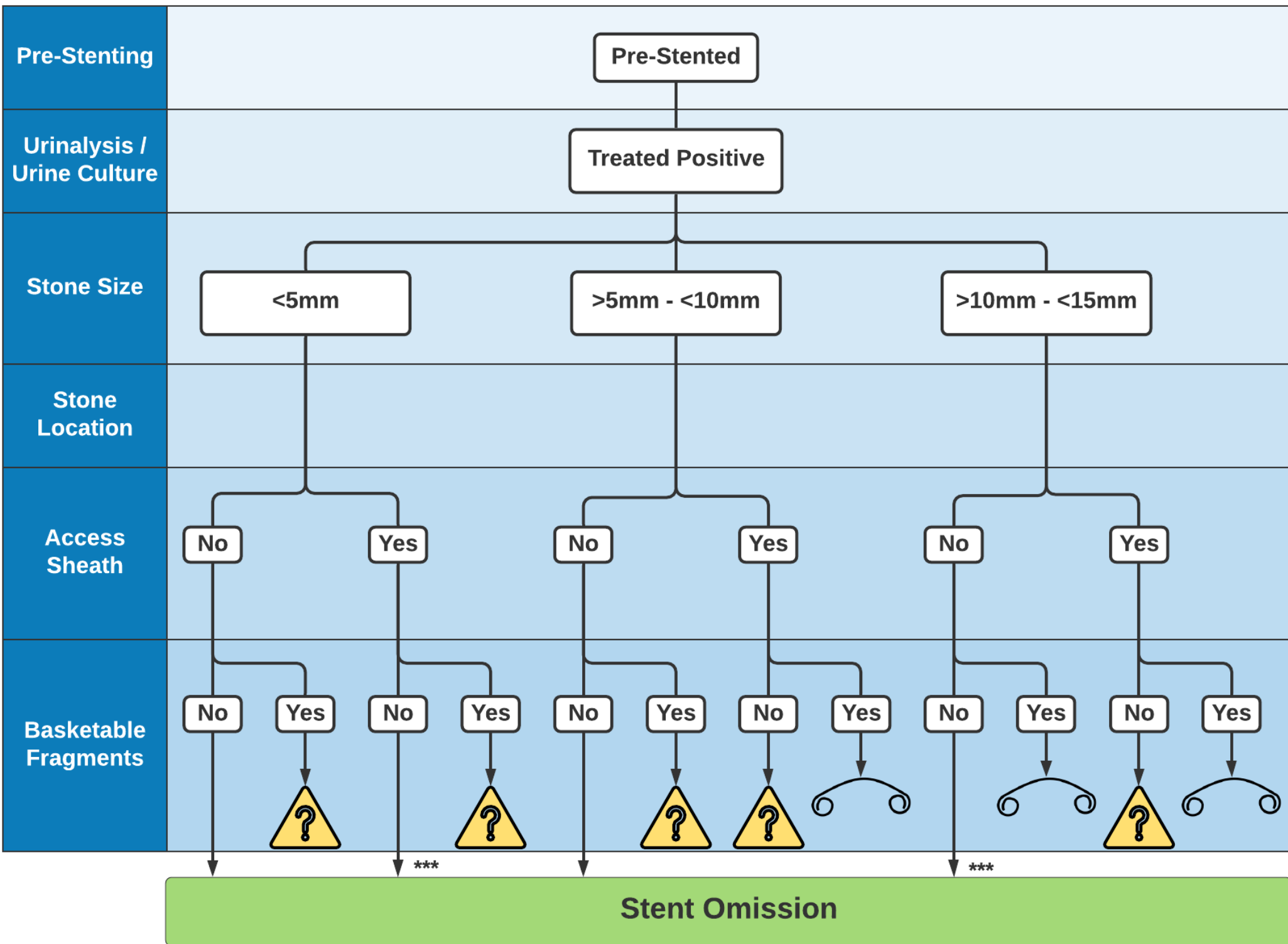


Stent Omission Appropriateness Criteria Clinical Scenarios



A nonprofit corporation and independent licensee
of the Blue Cross and Blue Shield Association



KEY:  = uncertain, apply clinical judgement  = stent placement recommended

*** If located in the kidney, then uncertain for stent omission appropriateness

Stent Omission

*** Innapropriate for omission if located in ureter and basketable fragments left behind

Urinalysis / Urine Culture

Stone Size

**Stone
Location**

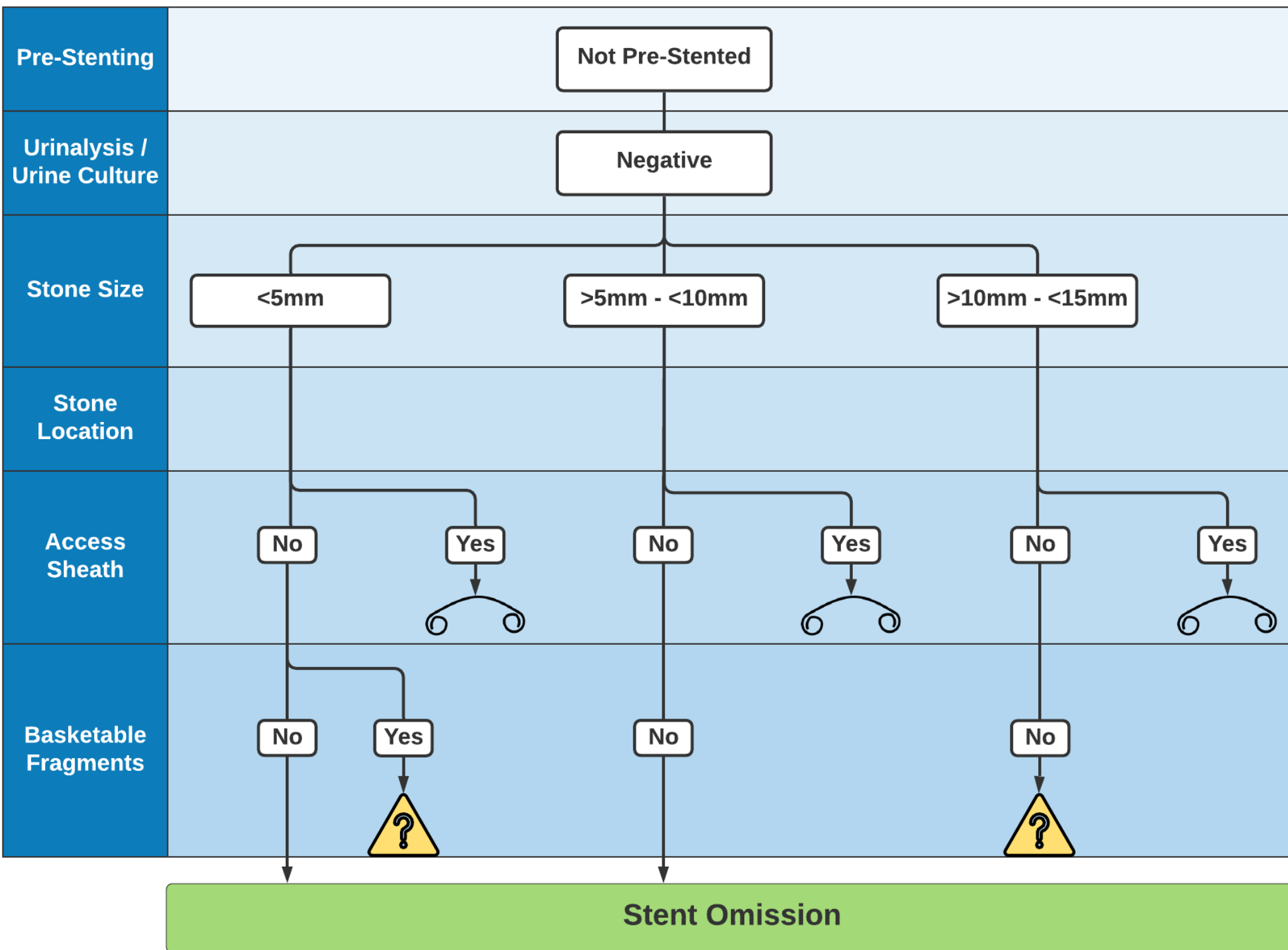
Access Sheath

Basketable Fragments

```
graph TD; A[Not Pre-Stented] --> B[Treated Positive Culture]; B --> C["<5mm"]; B --> D[">5mm - <10mm"]; B --> E[">10mm - <15mm"]; C --> F[Ureter]; C --> G[Kidney]; F --> H[No]; F --> I[Yes]; H --> J[No]; H --> K[Yes]; I --> L[?]; I --> M[?]; G --> N[No]; G --> O[Yes]; N --> P[?]; N --> Q[?]; O --> R[?]; O --> S[?]; D --> T[No]; D --> U[Yes]; T --> V[?]; T --> W[?]; U --> X[?]; U --> Y[?]; E --> Z[?]; E --> AA[?];
```

The flowchart for 'Not Pre-Stented' cases with 'Treated Positive Culture' starts by branching into three size categories: '<5mm', '>5mm - <10mm', and '>10mm - <15mm'. The '<5mm' category further branches into 'Ureter' and 'Kidney'. 'Ureter' branches into 'No' and 'Yes', with 'Yes' leading to a yellow triangle with a question mark. 'Kidney' branches into 'No' and 'Yes', with 'No' leading to a yellow triangle with a question mark. The '>5mm - <10mm' category branches into 'No' and 'Yes', both leading to yellow triangles with question marks. The '>10mm - <15mm' category leads directly to a yellow triangle with a question mark.

KEY:  = uncertain, apply clinical judgement  = stent placement recommended



KEY:  = uncertain, apply clinical judgement  = stent placement recommended